

# TH RANGE

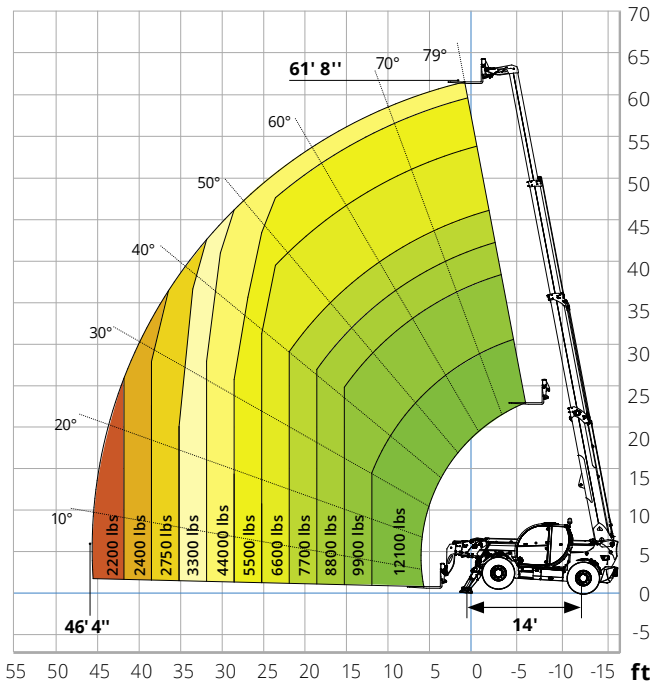
## TECHNICAL DATA TH 5,5.19 P / TH 5,5.19

Machine model	TH 5,5.19 P			TH 5,5.19		
	Telescopic handler					
Maximum lifting capacity	12,100 lbs (center of gravity 24 in)			12,100 lbs (center of gravity 24 in)		
Maximum lifting height	61' 8"			61' 8"		
Type	Deutz TCD 3,6 L4 Stage V	Deutz TCD 3,6 L4 Stage IV	Deutz TCD 3,6 L4 EDG Stage IIIA	Deutz TCD 3,6 L4 Stage V	Deutz TCD 3,6 L4 Stage IV	Deutz TCD 3,6 L4 EDG Stage IIIA
Rated power	74,4 kW (101,2 hp) @ 2,200 rpm			55,4 kW (75,3 hp) @ 2,200 rpm		
Maximum torque	410 Nm @ 1,600 rpm			405 Nm @ 1,300 rpm	390 Nm @ 1,300 rpm	390 Nm @ 1,300 rpm
Displacement	0.95 US gal			0.95 US gal		
Cylinders	4 in line			4 in line		
Engine configuration	Diesel direct injection turbocharged			Diesel direct injection turbocharged		
Cooling system	Water – intercooler			Water – intercooler		
Type	Hydrostatic			Hydrostatic		
Model	Bosch Rexroth			Bosch Rexroth		
Maximum pressure	500 bar			500 bar		
Displacements	Electronically controlled variable displacement pump Variable displacement motor			Electronically controlled variable displacement pump Variable displacement motor		
Gear box	Dropbox, 2 speeds forward-reverse			Dropbox, 2 speeds forward-reverse		
Type	Axles with planetary gearboxes			Assali con riduttori epicicloidali		
Rear axle	Oscillating and steering with hydraulic locking			Oscillating and steering with hydraulic locking		
Front axle	Oscillating and steering with levelling +/- 8°			Oscillating and steering with levelling +/- 8°		
Service brake	Hydraulically operated wet multi-disk brakes on each axle			Hydraulically operated wet multi-disk brakes on each axle		
Parking brake	Spring applied hydraulic release Multi-disk brake (S.A.H.R.)			Spring applied hydraulic release Multi-disk brake (S.A.H.R.)		
Tyres dimensions	445/65 R22,5			445/65 R22,5		
Max. travel speed	22 Mph			15 Mph		
Drawbar pull	72 kN			72 kN		
Gradeability	51 %			51 %		
Turning radius (end of forks)	221"			221"		
Total unladen	31,520 lbs			31,520 lbs		
Front axle unladen (boom retracted and lowered)	13,180 lbs			13,180 lbs		
Rear axle unladen (boom retracted and lowered)	18,340 lbs			18,340 lbs		
Fuel tank	38 US gal			38 US gal		
AdBlue	2.6 US gal *			2.6 US gal *		
Hydraulic oil tank	24 US gal			24 US gal		
Engine oil tank	2.4 US gal			2.4 US gal		
Cooling liquid	5.3 US gal			5.3 US gal		
Max. operating system pressure	350 bar			350 bar		
Circuit type	Load sensing			Load sensing		
Service pump	Bondioli & Pavesi - Variable displacement			Bondioli & Pavesi - Variable displacement		
Controls for boom movements	Danfoss – SIL 2 Electro-proportional valve			Danfoss – Electro-proportional valve		
Controls for stabilizers	Bosch Rexroth – Electro-hydraulic actuators			Bosch Rexroth – Electro-hydraulic actuators		
Movements control	1 joystick Danfoss with FNR switch and dead man safety device - Management with CAN bus technology			1 joystick Danfoss with FNR switch and dead man safety device - Management with CAN bus technology		

**Standard met**  
 EN 1459-1: concerning standards for variable-reach trucks  
 EN 13000: concerning standards for mobile cranes  
*Only for model TH 5,5.19 P:* EN 280: concerning standards for mobile elevating work platforms  
 FOPS Level 2 / ROPS  
 UE 2016/1628: concerning engine emissions standards

\*necessary only for models with Stage IV and Stage V

## Load chart on stabilizers



## Load chart on tyres

