



SWE25UF Mini Excavator

Operating Weight: 5,842 LBS (2,650 KG)

Gross Power: 20 HP (14.6 kW)

Dig Depth: 9'4" (3 m)



Turn
over for full
specifications!

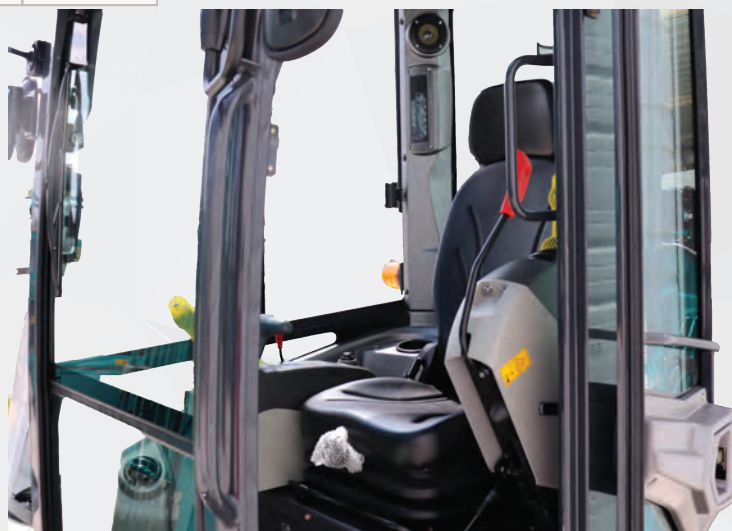
Technical Specifications and Product Highlights

Machine Weight		5,842 lbs	2,650 kg
Machine Dimensions	Overall Length	13'7"	4.14 m
	Overall Height	8'	2.45 m
	Overall Width	4' 11"	1.5 m
	Ground Clearance	1'	310 mm
	Tail Swing Radius	2' 6"	765 mm
Engine	Brand	YANMAR	
	Model	3TNV80F-SPSU	
	Displacement	.335 Gal	1.267 L
	Output	20 HP	14.6 kW
	Max Speed (High/Low)	2.7/1.6 mph	4.4/2.6 kph
Working Ranges	Max Cutting Height	14' 4"	4.355 m
	Max Loading Height	9' 11"	3 m
	Max Digging Depth	9' 4"	2.84 m
	Max Vertical Digging Depth	8' 6"	2.58
	Max Digging Reach	15' 8"	4.775 m
	Boom Swing Angle (Left/Right)	65/50 degrees	
	Front Swing Radius	6' 6"	1.98m
	Max Digging Force (Arm)	3.1 kip	14 kN
	Max Digging Force (Bucket)	5.4kip	24 kN
	Swing Speed	10 rpm	
	Ground Pressure	3.63 psi	25 kpa
Tracks	Track Width	11.8"	300 mm
	Track Length	6' 7"	1.990 m
	Track Type	Rubber/Steel Crawler	
	Gradeability	30 Degrees	
Hydraulics	Brand	KYB	
	Type	Variable Plunger Pump	
	Total Flow	22 gal/min	83.3 L/min
Fuel and Hydraulics Tanks	Fuel Tank Capacity	6.9 Gal	26 L
	Hydraulic Oil Capacity	6.3 Gal	24 L

Zero-Tail Swing for increased maneuverability



YANMAR Engine with slide up access panel for maintenance



Enclosed cab offers removable windshield and sliding windows for airflow

Sunward America Corp

Web: www.sunwardamerica.com

Address: 2710 Geesling Rd, Denton TX 76208

Contact Info:

Phone: (469)-353-6890

Email: info@sunwardamerica.com

Model:

SWE18UF

SWTE18UF 9-20