

Magni: **EXPERIENCE,** **RELIABILITY AND VERSATILITY**

Magni has been recognized as the industry leader for the development of its heavy-duty telescopic handlers: the HTH range. With 8 models offering lifting capacities from 10 to 50

metric tons, Magni HTH machines are the idea choice for those requiring optimal performance and reliability in extreme conditions. They are the undisputed champions when it comes to heavy-duty work.



HTH 10.10



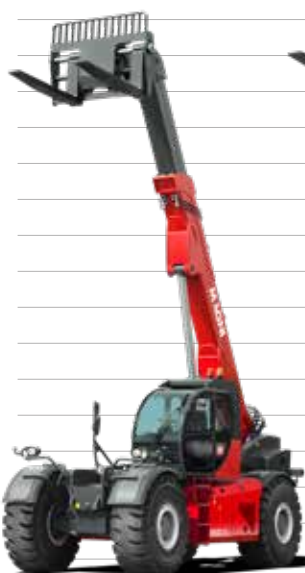
HTH 16.10



HTH 20.10



HTH 24.11



HTH 27.11



HTH 30.12



HTH 35.12



HTH 50.14



CAPACITY & HEIGHT

Model	Max. Capacity	Max. Height
HTH 10.10	22,000 lbs	31.2'
HTH 16.10	35,280 lbs	31.1'
HTH 20.10	44,100 lbs	32'
HTH 24.11	53,200 lbs	34.6'
HTH 27.11	59,500 lbs	35.8'
HTH 30.12	66,140 lbs	37' 5"
HTH 35.12	77,000 lbs	37' 5"
HTH 50.14	110,000 lbs	46'



WARRANTY

All HTH models feature a 24-month parts and service warranty*.

The Magni Warranty requires that from the time it is new, your machine is to be regularly serviced by an authorized Magni dealer.

Our warranty covers any defects attributable to faulty materials or workmanship for a maximum of 2 years or 2,000 machine working hours.

Our Aftersales Team and Spare Parts Department are always ready to support you, every day of the year.

*Consumables are excluded from the warranty.



GROUND CLEARANCE

Model Name	Ground clearance
HTH 10.10	14.6"
HTH 16.10	17.3"
HTH 20.10	15.7"
HTH 24.11	16.9"
HTH 27.11	20.9"
HTH 30.12	21.7"
HTH 35.12	21.7"
HTH 50.14	24.4"



CAPACITY AT MAX REACH

Model Name	Max. capacity	Max. reach
HTH 10.10	5,732 lbs	16.4'
HTH 16.10	11,023 lbs	13.9'
HTH 20.10	14,330 lbs	16.7'
HTH 24.11	15,873 lbs	18.7'
HTH 27.11	16,534 lbs	21.3'
HTH 30.12	17,637 lbs	22.6'
HTH 35.12	19,841 lbs	22.6'
HTH 50.14	28,660 lbs	25.9'

HTH 10.10		
MACHINE MODEL	Maximum lifting capacity	22,046 lbs
	Load center	1.96'
	Maximum lifting height	31.2'
	Maximum reach	16.6'
ENGINE	Type	Deutz TCD 3,6 L4 - Tier 4f
	Rated power	100 kW (134 hp) @ 2,200 rpm
	Maximum torque	500 Nm @ 1,600 rpm
	Displacement	0.95 US gal
	Cylinders	4 in line
	Engine configuration	Turbocharged direct injection diesel
	Cooling system	Water - intercooler
CAB	FOPS-ROPS tested hermetic cab with protectors	•
	Front, rear and upper wiper	•
	Headlights for road circulation, flashing beacon	•
	Rear view mirrors	•
	Heating - Air conditioning	•
CONTROLS	Multi-function electro proportional joystick	•
	Heavy Duty with epicyclic reduction	•
	One steering cylinders each axle	•
	Levelling correction front axle	+ 8° on the right and + 8° on the left
AXLES AND BRAKES	3 types of steering	- with front steering - with round steer - with crab steering
	Tilting rear axle	•
	Hydraulic servo-assisted multidisc brake in oil bath on both axles, with double circuit	•
	Negative parking brake	•
	Heavy Duty with epicyclic reduction	•
	Tyre size	445/65 - R22,5 ** two each axle, driving and steering
PERFORMANCE	Max. travel speed	25 Mph
	Drawbar pull	84 kN
	Gradeability	66%
	Turning radius (at wheels)	13.5'
WEIGHTS	Total unladen	28,880 lbs
	Front axle unladen (boom retracted and lowered)	10,141 lbs
	Rear axle unladen (boom retracted and lowered)	18,739 lbs
TRANSMISSION	Hydrostatics	Rexroth / Danfoss
	Variable displacement hydrostatic pump with electronic control	•
	Variable displacement hydrostatic motor	One
	Gearbox	Gearbox with 2 speeds forward / reverse
HYDRAULIC CIRCUIT	Load sensing piston pump	•
	Circuit at 350 bar	•
	Proportional hydraulic electrovalve	Danfoss
	Suction and return line filters	•
	High pressure flexible hoses	•
TANKS CAPACITIES	Diesel fuel tank	51.5 US gal
	AdBlue	2.6 US gal
	Hydraulic fluid	50.2 US gal
	Engine oil	2.4 US gal
	Coolant	5.3 US gal
SAFETY	Electronic safety system which controls the load with definition of the lifted load, radius and comparison with the diagrams stored	•
	Block of aggravating movements of the load	•
	Safety valves on cylinders	•

HTH 16.10	HTH 20.10	HTH 24.11
35,274 lbs	44,090 lbs	52,911 lbs
1.96'	1.96'	2.95'
31.8'	31.8'	34.5'
16.4'	16.7'	18.7'
Volvo TAD572 VE - Tier 4f	Volvo TAD572 VE - Tier 4f	Volvo TAD572 VE - Tier 4f
160 kW (218 hp) @ 2,200 rpm	160 kW (218 hp) @ 2,200 rpm	160 kW (218 hp) @ 2,200 rpm
910 Nm @ 1,410 rpm	910 Nm @ 1,410 rpm	910 Nm @ 1,410 rpm
1.35 US gal	1.35 US gal	1.35 US gal
4 in line	4 in line	4 in line
Turbocharged diesel direct injection common rail	Turbocharged diesel direct injection common rail	Turbocharged diesel direct injection common rail
Water - intercooler	Water - intercooler	Water - intercooler
•	•	•
•	•	•
•	•	•
•	•	•
•	•	•
•	•	•
•	•	•
•	•	•
+ 8° on the right and + 8° on the left	+ 8° on the right and + 8° on the left	+ 10° on the right and + 10° on the left
- with front steering - with round steer - with crab steering	- with front steering - with round steer - with crab steering	- with front steering - with round steer - with crab steering
•	•	•
•	•	•
•	•	•
•	•	•
16,00 - R25 ** two each axle, driving and steering	16,00 - R25 ** two each axle, driving and steering	18,00 - R25 ** two each axle, driving and steering
15.5 Mph	15.5 Mph	15.5 Mph
113 kN	156 kN	184 kN
60%	66%	67%
16.6'	18.8'	17.7'
43,329 lbs	52,911 lbs	65,477 lbs
15,873 lbs	17,637 lbs	20,283 lbs
26,455 lbs	35,274 lbs	45,195 lbs
Rexroth / Danfoss	Rexroth / Danfoss	Rexroth / Danfoss
•	•	•
One	One	One
Gearbox with 2 speeds forward / reverse	Gearbox with 2 speeds forward / reverse	Gearbox with 2 speeds forward / reverse Differential hydraulic locking
•	•	•
•	•	•
Danfoss	Bosch/Bucher	Bucher
•	•	•
•	•	•
71.3 US gal	71.3 US gal	51.5 US gal
10.6 US gal	10.6 US gal	10.6 US gal
51.5 US gal	51.5 US gal	58.1 US gal
4.2 US gal	4.2 US gal	4.2 US gal
10.6 US gal	10.6 US gal	10.6 US gal
•	•	•
•	•	•
•	•	•

• = included

HTH 27.11

MACHINE MODEL	Maximum lifting capacity	59,525 lbs
	Load center	3.93'
	Maximum lifting height	35.8'
	Maximum reach	21.7'
ENGINE	Type	Volvo TAD572 VE - Tier4f
	Rated power	160 kW (218 hp) @ 2,200 rpm
	Maximum torque	910 Nm @ 1,450 rpm
	Displacement	1.35 US gal
	Cylinders	4 in line
	Engine configuration	Diesel direct injection common rail
	Cooling system	Water - intercooler
CAB	FOPS-ROPS tested hermetic cab with protectors	•
	Front, rear and upper wiper	•
	Headlights for road circulation, flashing beacon	•
	Rear view mirrors	•
	Heating - Air conditioning	•
CONTROLS	Multi-function electro proportional joystick	•
	Heavy Duty with epicyclic reduction	•
	One steering cylinders each axle	•
	Levelling correction front axle	+ 5° on the right and + 5° on the left
AXLES AND BRAKES	3 types of steering	- with front steering - with round steer - with crab steering
	Tilting rear axle	•
	Hydraulic servo-assisted multidisc brake in oil bath on both axles, with double circuit	•
	Negative parking brake	•
	Heavy Duty with epicyclic reduction	•
	Tyre size	26,5 - R25 ** two each axle, driving and steering
PERFORMANCE	Max. travel speed	15.5 Mph
	Drawbar pull	194 kN
	Gradeability	56%
	Turning radius (at wheels)	28'
WEIGHTS	Total unladen	78,264 lbs
	Front axle unladen (boom retracted and lowered)	27,999 lbs
	Rear axle unladen (boom retracted and lowered)	50,265 lbs
TRANSMISSION	Hydrostatics	Rexroth / Danfoss
	Variable displacement hydrostatic pump with electronic control	•
	Variable displacement hydrostatic motor	One
	Gearbox	Gearbox with 2 speeds forward / reverse Differential hydraulic locking
HYDRAULIC CIRCUIT	Load sensing piston pump	•
	Circuit at 350 bar	•
	Proportional hydraulic electrovalve	Bucher
	Suction and return line filters	•
	High pressure flexible hoses	•
TANKS CAPACITIES	Diesel fuel tank	89.8 US gal
	AdBlue	10.6 US gal
	Hydraulic fluid	93.8 US gal
	Engine oil	7.1 US gal
	Cooliant	13.2 US gal
SAFETY	Electronic safety system which controls the load with definition of the lifted load, radius and comparison with the diagrams stored	•
	Block of aggravating movements of the load	•
	Safety valves on cylinders	•

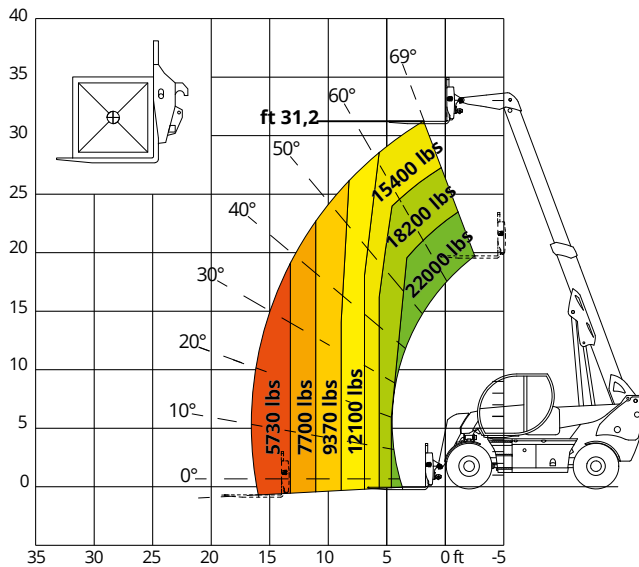
HTH 30.12	HTH 35.12	HTH 50.14
66,139 lbs	77,162 lbs	110,231 lbs
3.93'	3.93'	3.93'
37.4'	37.4'	45.9'
22.6'	22.6'	26.2'
Volvo TAD873VE - Tier 4f	Volvo TAD873VE - Tier 4f	Volvo TAD873VE - Tier 4f
235 kW (320 hp) @ 2200 rpm	235 kW (320 hp) @ 2200 rpm	235 kW (320 hp) @ 2200 rpm
1,310 Nm @ 1,450 rpm	1,310 Nm @ 1,450 rpm	1,310 Nm @ 1,450 rpm
2.0 US gal	2.0 US gal	7,7 l
4 in line	4 in line	4 in line
Turbocharged diesel direct injection common rail	Turbocharged diesel direct injection common rail	Turbocharged diesel direct injection common rail
Water - intercooler	Water - intercooler	Water - intercooler
•	•	•
•	•	•
•	•	•
•	•	•
•	•	•
•	•	•
•	•	•
•	•	•
+ 5° on the right and + 5° on the left	+ 5° on the right and + 5° on the left	+ 5° on the right and + 5° on the left
- with front steering	- with front steering	- with front steering
- with round steer	- with round steer	- with round steer
- with crab steering	- with crab steering	- with crab steering
•	•	•
•	•	•
•	•	•
•	•	•
29,5 - R25 ** two each axle, driving and steering 24.00-35**optional	29,5 - R25 ** two each axle, driving and steering	29,5 - R25 ** two each axle, driving and steering
15.5 Mph	15.5 Mph	12.4 Mph
365 kN	365 kN	390 kN
54%	45%	50%
91.9'	31.9'	31.9'
90,169 lbs	98,767 lbs	143,300 lbs
41,226 lbs	32,628 lbs	61,729 lbs
48,943 lbs	66,139 lbs	88,185 lbs
Rexroth	Rexroth	Rexroth
•	•	•
Two	Two	Two
Hydraulic gearbox with 3 speeds powershift forward / reverse Differential hydraulic locking	Hydraulic gearbox with 3 speeds powershift forward / reverse Differential hydraulic locking	Hydraulic gearbox with 3 speeds powershift forward / reverse Differential hydraulic locking
•	•	•
•	•	•
Bucher	Bucher	•
•	•	•
•	•	•
89.8 US gal	89.8 US gal	not available
10.6 US gal	10.6 US gal	not available
93.8 US gal	93.8 US gal	not available
7.1 US gal	7.1 US gal	not available
13.2 US gal	13.2 US gal	not available
•	•	•
•	•	•
•	•	•

• = included

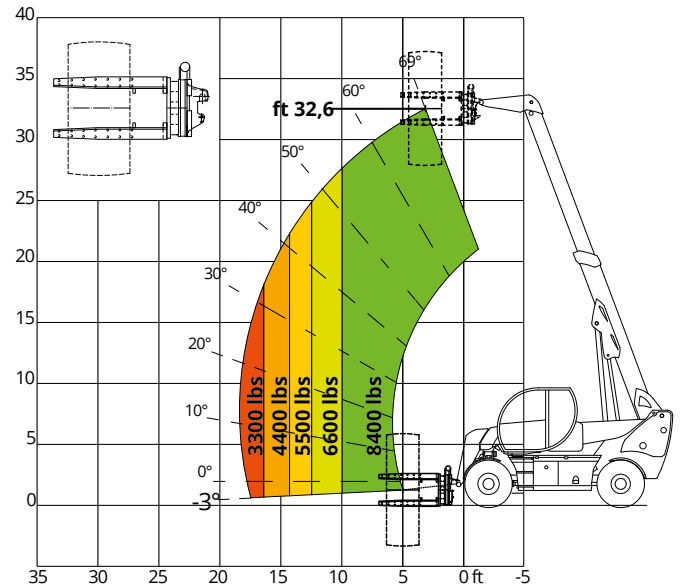
LOAD CHARTS

HTH 10.10

LOAD CHART WITH FORKS

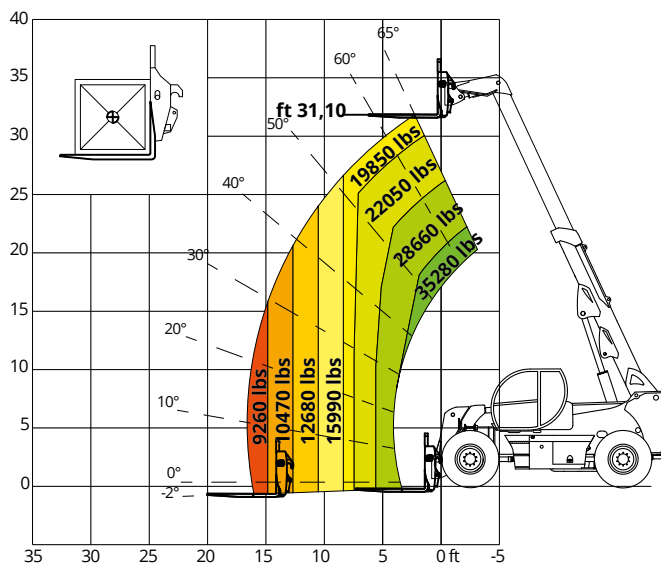


LOAD CHART WITH TIRES CLAMP
MODEL TC3,8-49

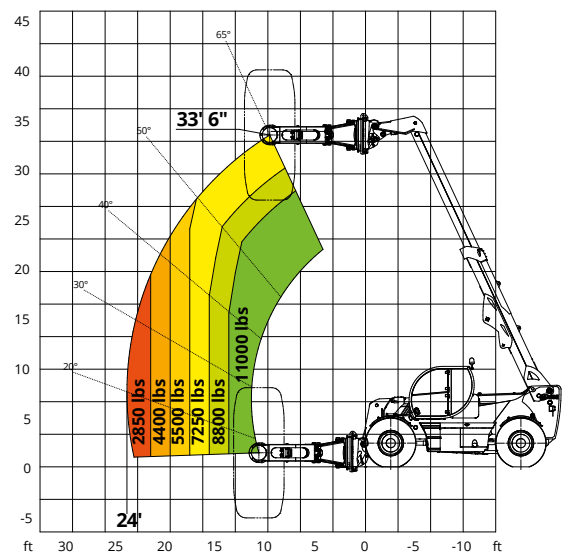


HTH 16.10

LOAD CHART WITH FORKS

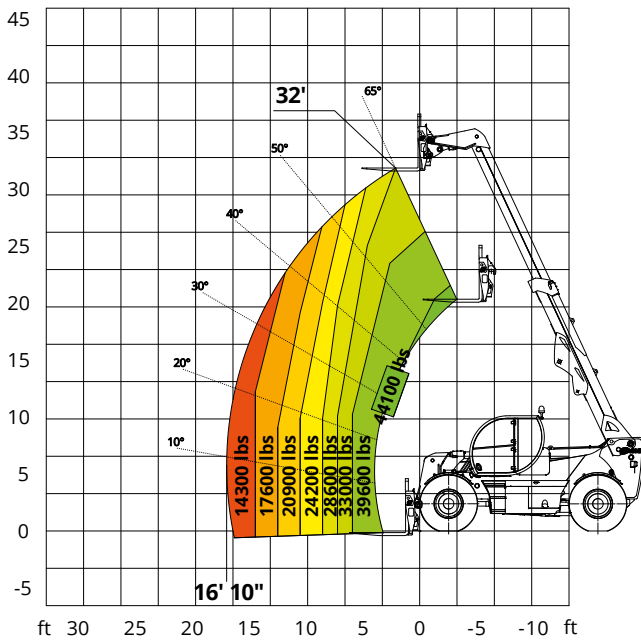


LOAD CHART WITH TIRES CLAMP
MODEL TC 08.63

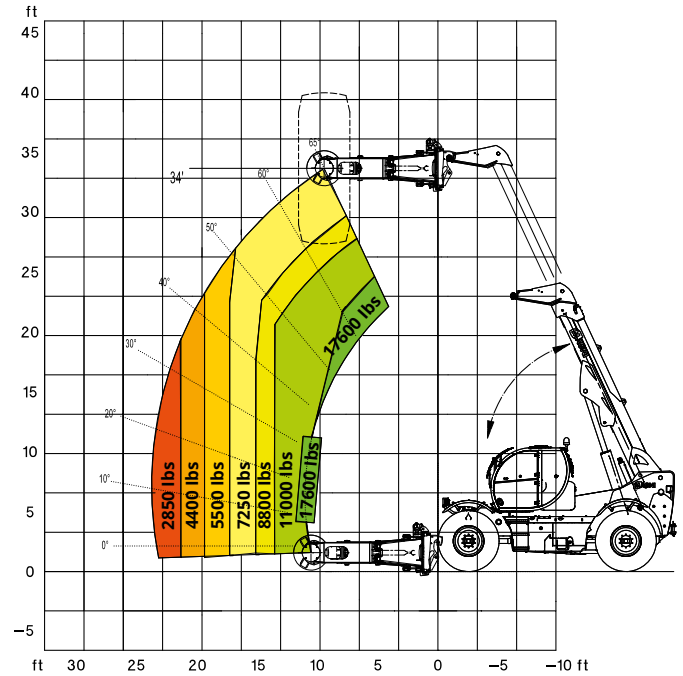


HTH 20.10

LOAD CHART
WITH FORKS

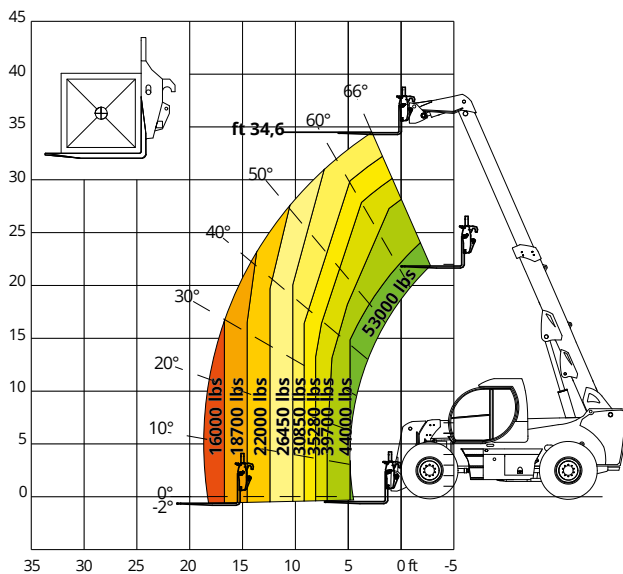


LOAD CHART WITH TIRES CLAMP
MODEL TC 08.63

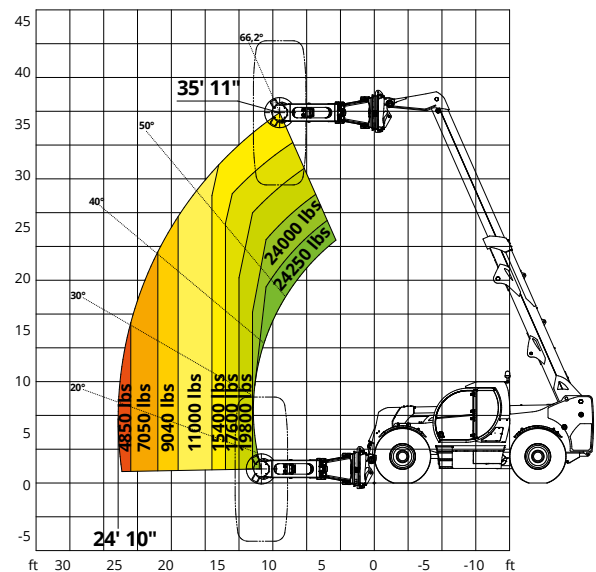


HTH 24.11

LOAD CHART
WITH FORKS



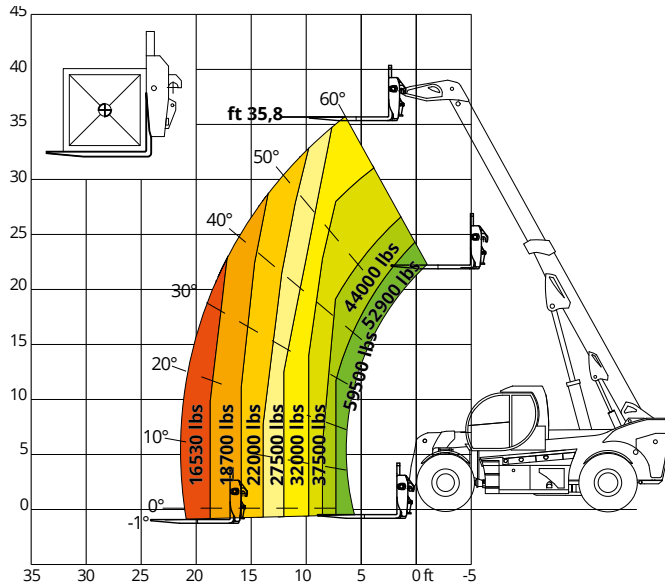
LOAD CHART WITH TIRES CLAMP
MODEL TC 16.63



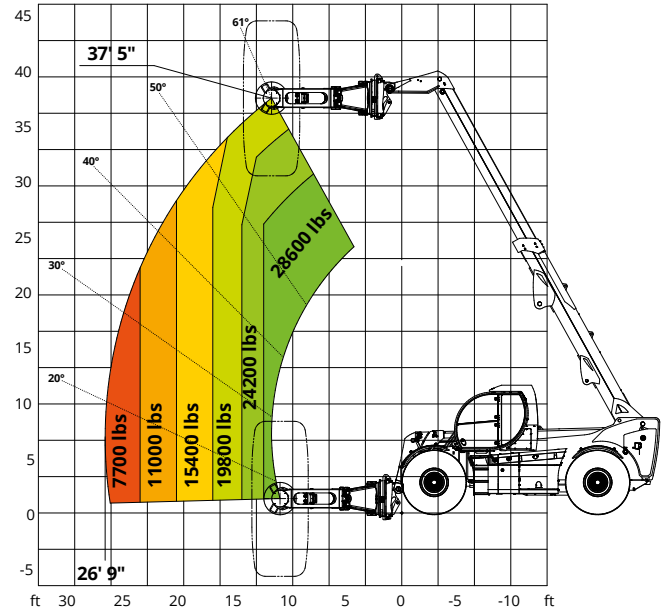
LOAD CHARTS

HTH 27.11

LOAD CHART WITH FORKS

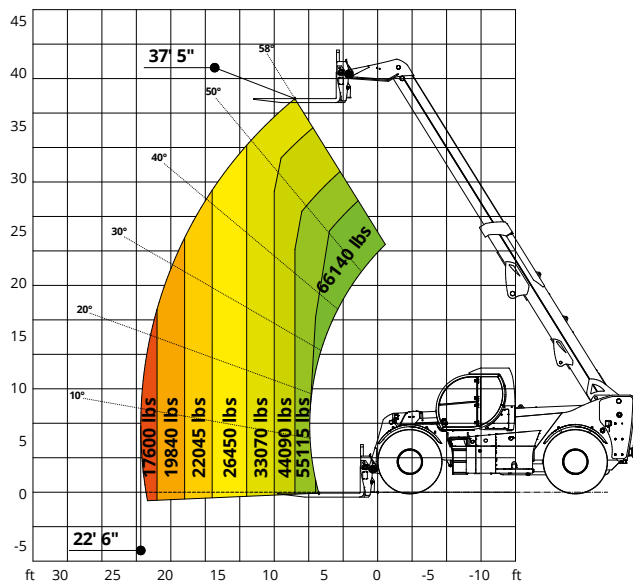


LOAD CHART WITH TIRES CLAMP
MODEL TC 16.63

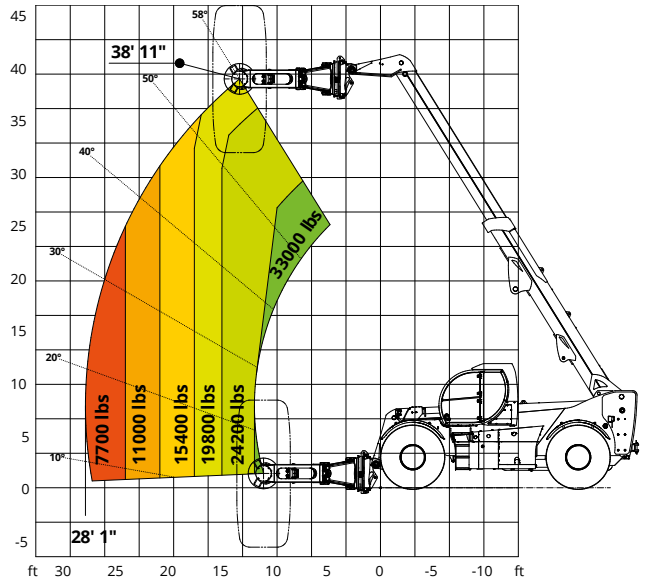


HTH 30.12

LOAD CHART WITH FORKS

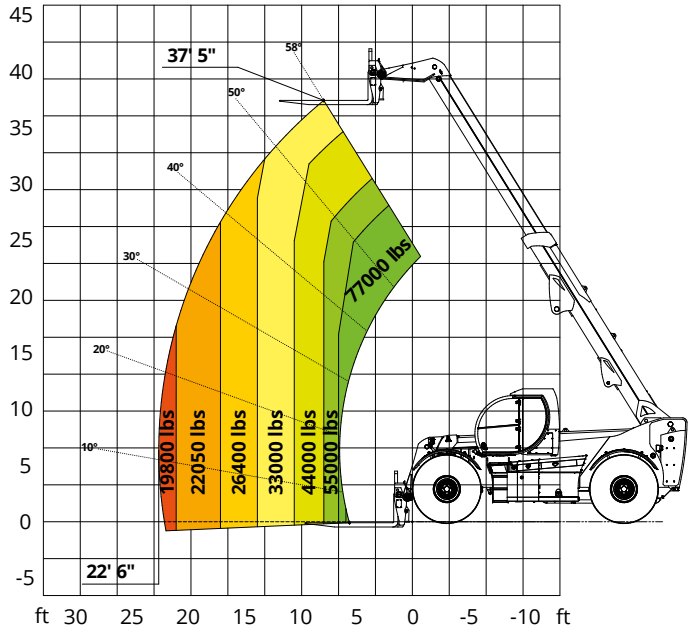


LOAD CHART WITH TIRES CLAMP
MODEL TC 16.63

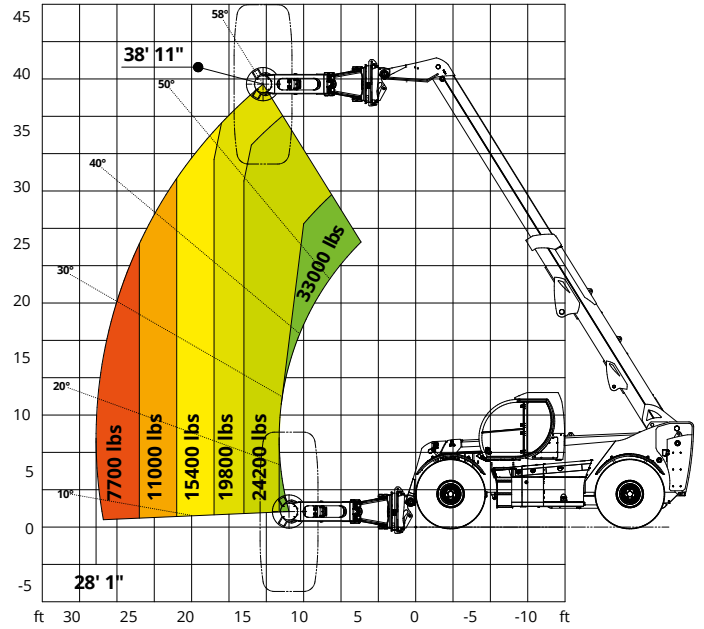


HTH 35.12

LOAD CHART
WITH FORKS

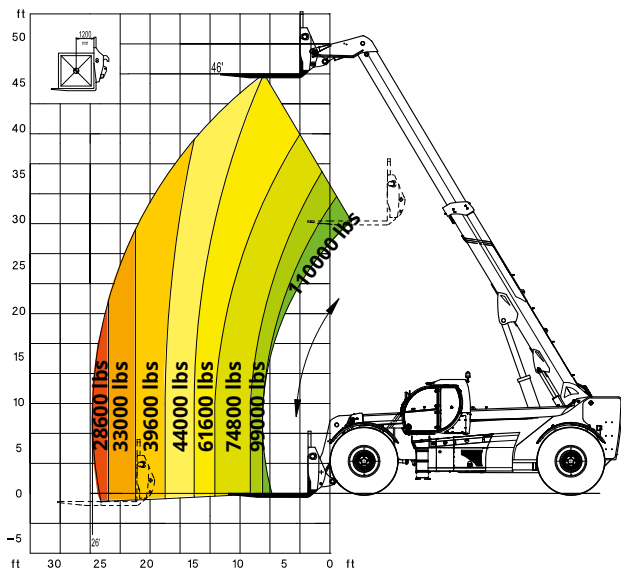


LOAD CHART WITH TIRES CLAMP
MODEL TC 16.63

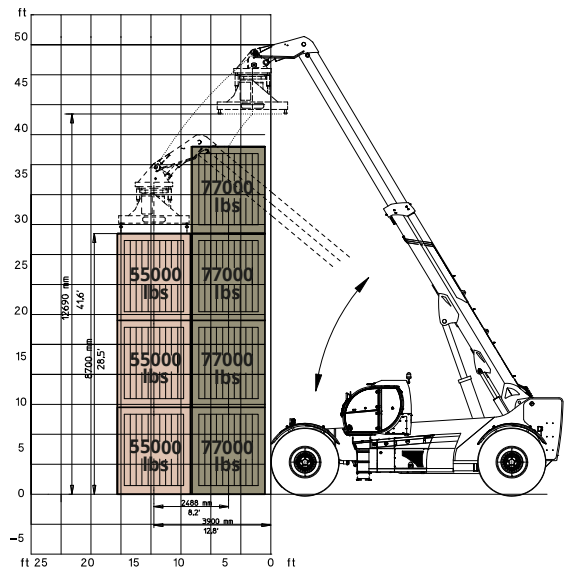


HTH 50.14

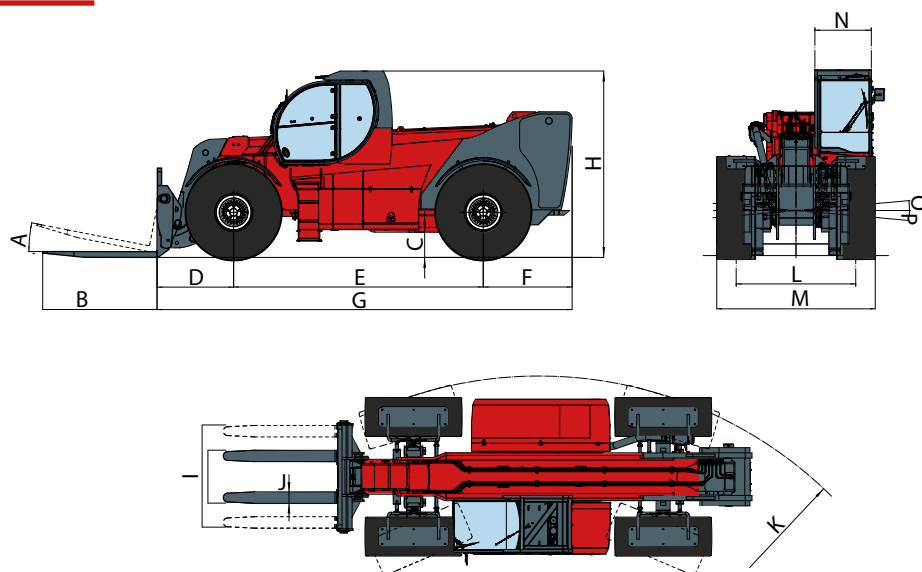
LOAD CHART
WITH FORKS



LOAD CHART WITH CONTAINER
SPREADER 20"-40"



MACHINE DIMENSIONS



DIMENSIONS

		HTH 10.10	HTH 16.10	HTH 20.10	HTH 24.11	HTH 27.11	HTH 30.12	HTH 35.12	HTH 50.14
A		14°	12°	12°	12°	11°	11°	11°	11°
B *		59	59	59	71	94	94	94	94
C *		15	17	16	17	21	22	22	24
D *		39	45	34	50	53	57	57	63
E *		130	157	157	157	177	189	189	272
F *		54	48	50	65	67	67	67	67
G *		223	251	253	272	297	313	313	421
H *		118	122	124	118	139	142	142	150
I *	max	68	79	79	78	94	78	78	on request
	min	32	46	44	49	56	53	53	
J *		8	8	8	10	12	12	13	on request
K *		161	199	226	213	335	382	382	378
L *		81	79	81	94	88	89	89	101
M *		100	100	100	117	117	118	118	126
N *		41	41	41	41	41	41	41	41
O		8°	8°	8°	10°	5°	5°	5°	5°
P		8°	8°	8°	10°	5°	5°	5°	5°

*measurements expressed in inches