



**CMC**  
THE SPECIALIST

**CMC 92HD+ ARBOR PRO**

**TECHNICAL DATA SPECSHEET**





## AERIAL | STANDARD

- 92 ft Working height
- Up to 46 ft lateral reach
- Double telescopic lower boom
- Triple telescopic upper boom
- 90° Independently articulating jib
- 180° Basket rotation (+/- 90° each way)
- 400° non-continuous boom rotation
- Wired control panel in basket with 2 joysticks with single handed capability, for all functions including booms, outriggers, track drive, automatic leveling, speed controls, and home function. Joysticks eliminate the need for a separate deadman switch.



## OUTRIGGERS | STANDARD

- Automatic outrigger self leveling
- Multi-position outriggers in wide/narrow footprints
- Four (4) specially designed sliding outrigger pads
- Heavy-duty outrigger piston protective covers



## CHASSIS | STANDARD

- Wireless remote control with color screen for all functions including booms, outriggers, track drive, automatic leveling, speed controls, and home function.
- Cable to connect wireless remote in case of a problem with the wireless system
- Radio remote control storage box and built in battery charger for radio remote lithium batteries
- Remote connection kit (All Access can connect to machine remotely if unsecured WiFi is shared with machine)
- Two (2) lithium batteries and built in charger for radio remote control



## TRACKS | STANDARD

- Black rubber tracks (set)
- Vertically and horizontally hydraulically adjustable tracks
- Ability to raise basket & jib up out of the way while driving the tracks



## POWER | STANDARD

- Kubota D902 diesel engine
- 24V Battery backup electric pump (intermittently use the 24V battery to operate all functions)



## BASKETS | STANDARD

- Removable two man aluminum basket with rounded outer corners for better use. Size is 55" long x 27.5" wide x 43.3" high
- Removable single man 24" x 24" fiberglass basket equipped with basket quick connect bracket and vinyl fiberglass bucket cover with tether



## OTHER | STANDARD

- 1 & 3 years warranty, 1 yr "bumper to bumper" and 3 yrs on certain components. Unlimited use hours.
- Detailed owners maintenance and use manual, including parts and service diagrams
- One (1) Fall arrest safety harness





## CHASSIS | OPTIONAL

- Travel alarm
- Warning light
- 1 Custom paint color: Choice of more than 200 colors.  
\*No fluorescent or metallic colors\*
- 2 Custom paint colors: Choice of more than 200 colors.  
\*No fluorescent or metallic colors\*



## TRACKS | OPTIONAL

- Non-marking grey tracks (replaces the standard black tracks)
- Track socks



## POWER | OPTIONAL

- Hybrid: Kubota diesel + 200A lithium batteries
- Full lithium battery power with built in battery charger. Should be paired with option 0000110. Kubota diesel is removed
- Auxiliary 120V 20A plug in electric motor with charger for 12V battery. This is not a battery system. With this system, you can plug the machine in and use it on 100% AC electric power. This is in addition to the combustion engine



## PLATFORM STATION | OPTIONAL

- Hydraulic Tool Outlet in basket
- High pressure air/water hoses routed internally from the ground to the basket - 2900PSI
- 120V Electric outlet in basket with extension cord through the booms
- Additional basket: Removable single man aluminum basket 31.5" L x 23.6" W x 43.3" H. Basket support with wheels for easy handling is included
- Additional basket: Removable two man made in USA 24" x 48" fiberglass basket equipped with basket quick connect bracket. If you only want the 2 man fiberglass basket and not the standard 1 man fiberglass basket, reduce this price by \$1,000



## OTHER | OPTIONAL

- Biodegradable hydraulic fluid (non-toxic, natural fluid. For extreme cold or sensitive locations)
- Ratchet straps (each. 4 are already included)
- Additional fall arrest aerial lift harness and lanyard kit including storage bag



### LITHIUM ION BATTERIES



### NON-MARKING TRACKS



### HYDRAULIC TOOL OUTLET



### CUSTOM PAINT COLORS





## TECHNICAL SPECIFICATIONS

### PERFORMANCE

Maximum working height . . . . .	92'
Maximum side reach at 507 lbs . . . . .	38'
Maximum side reach at 176 lbs . . . . .	46'
Maximum weight load with standard basket . . . . .	507 lbs
Maximum weight load with optional single man fiberglass basket . . . . .	350 lbs
Moveable Jib articulating range . . . . .	90°
Turret rotation range . . . . .	+/-400°
Basket rotation range. . . . .	+/- 90°
Maximum slope to stabilize (deployment) . . . . .	19° (34%)
Height / Width tracks adjustment. . . . .	7"
Maximum slope approach angle / slope . . . . .	13° (24%)
Gradeability -- max. travel angle / slope* . . . . .	19° (34%)
Gradeability -- max. travel cross hill . . . . .	19° (34%)
Maximum crawler travel speed** . . . . .	3 mph

\*This is the standard setting. The standard setting can be overridden to: 31° (60.1%)

\*\*3 speeds: Slow, Slow with Torque, Fast

### DIMENSIONS

Basket height (basket is removable, variations available) . . . . .	43"
Basket width . . . . .	27"
Basket length . . . . .	48"
Total length. . . . .	22' 4"
Length without basket. . . . .	20'
Height in transport position . . . . .	78"
Total width (without basket). . . . .	35"
Free height from the ground. . . . .	15"
Tracks (LxW) . . . . .	70" x 10"
Outrigger spread length in narrow position. . . . .	21' 5"
Outrigger spread width in narrow position . . . . .	8' 5"
Outrigger spread length in wide position . . . . .	16' 10"
Outrigger spread width in wide position . . . . .	14' 4"
Outrigger foot diameter . . . . .	9 1/2"

### WEIGHT

Total weight. . . . .	9,200 lbs
Maximum outrigger foot pressure . . . . .	75.1 lb/1n2
Maximum track pressure . . . . .	3.41 lb/1n2
Maximum pressure in travel . . . . .	146.85 lb/ft2
Maximum pressure in work (wide outrigger setup). . . . .	26.22 lb/ft
Maximum pressure in work (narrow outrigger setup). . . . .	39.12 lb/ft2
Maximum pressure in work (one side wide, one side narrow). . . . .	31.54 lb/ft2

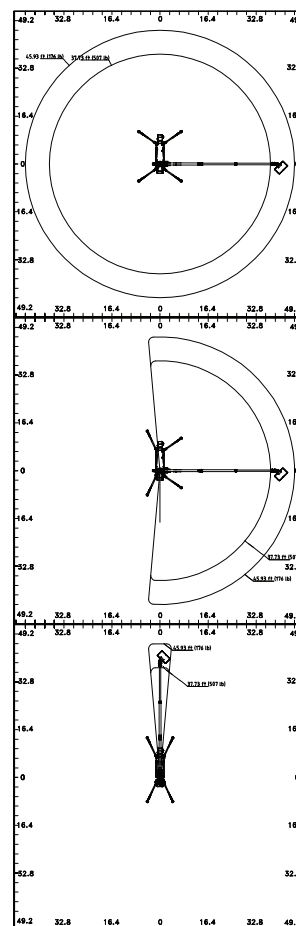
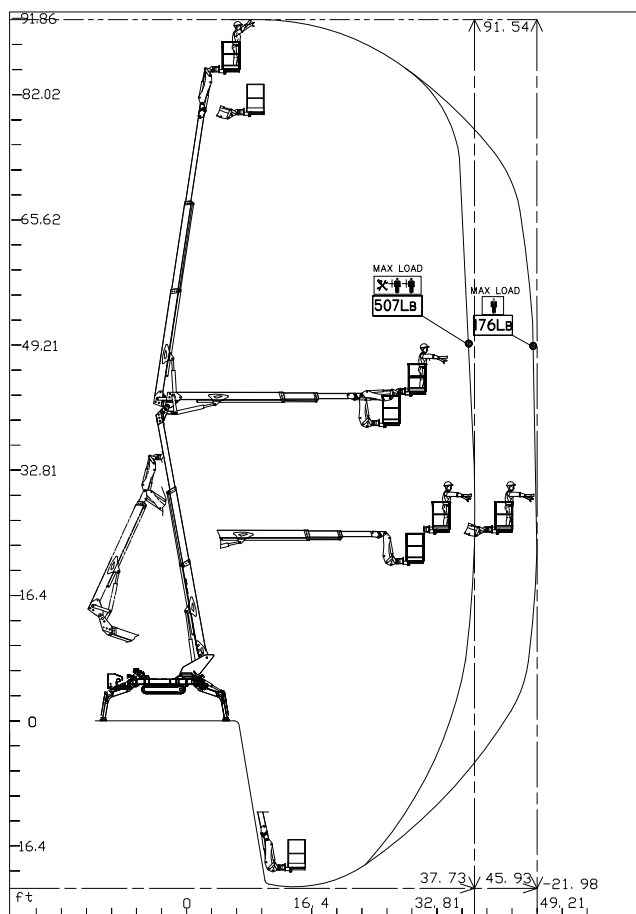
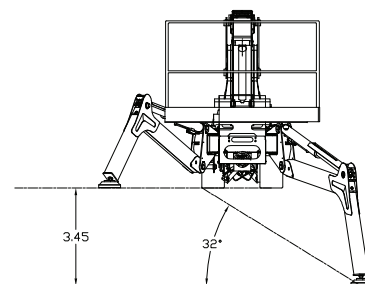
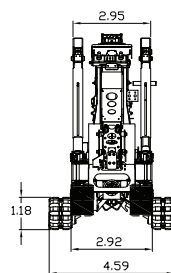
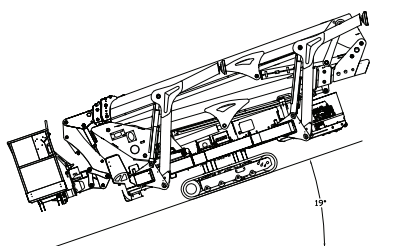
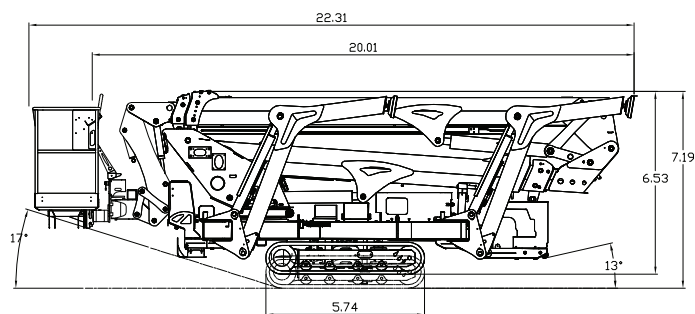
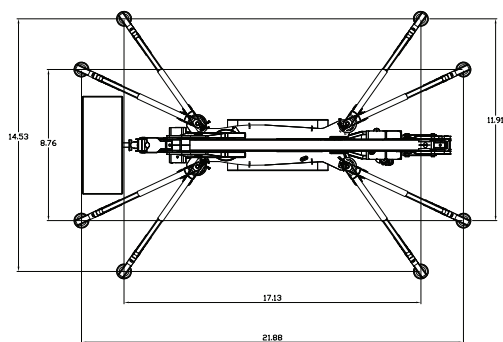
### POWER

Kubota D-902 E3B diesel engine . . . . .	21.6 HP
Diesel fuel tank capacity . . . . .	4 gallons
120V 20A plug in electric motor (optional)	
Lithium ion batteries (optional)	



## DIAGRAMS

\*Measurements are in feet







GALLERY

