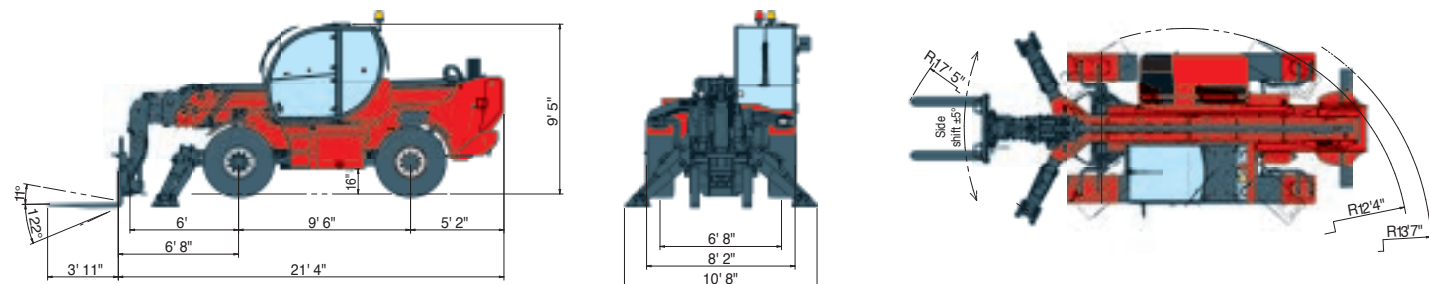


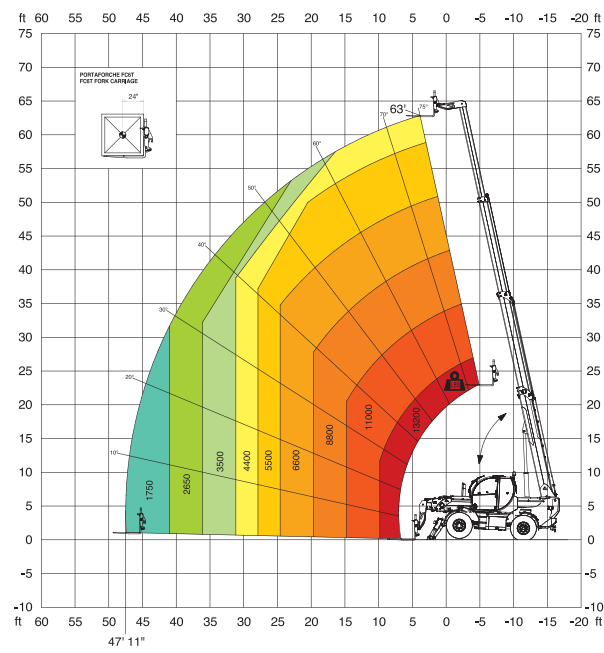
MACHINE MODEL	Telescopic handler	TH 6.20	
	Maximum lifting capacity	13.200 lbs (center of gravity 24 in)	
	Maximum lifting height	63,0 ft	
ENGINE - DEUTZ	Type	Deutz TCD 3.6 L4 - Tier IV Final	Deutz TCD 3.6 L4 EDG - Tier III A
	Rated power	100 kW - 134 HP at 2.200 rpm	100 kW - 134 HP at 2.200 rpm
	Maximum torque	500 Nm at 1.600 rpm	500 Nm at 1.600 rpm
	Displacement	3,6 l	3,6 l
	Cylinders	4 in line	4 in line
	Fuel	Diesel direct injection turbocharged	Diesel direct injection turbocharged
	Cooling system	Water — intercooler	Water — intercooler
TRANSMISSION	Type	Hydrostatic	
	Model	Bosch — Rexroth	
	Maximum pressure	500 bar	
	Displacements	Variable displacement pump electronically controlled. Variable displacement motor	
	Gear box	2 speeds forward-reverse	
AXLES AND BRAKES	Type	Axles with epicyclic reduction gear	
	Rear axle	Oscillating and steering with hydraulic locking	
	Front axle	Steering - Tilting - Shifting	
	Service brake	Hydraulically activated, oil-immersed multi-disc type on each axle	
	Parking brake	Hydraulic with negative action	
	Tyres dimensions	445/65 R22,5	
PERFORMANCE	Max. travel speed	25 Mph	
	Drawbar pull	66 kN	
	Gradeability	44%	
	Turning radius (end of forks)	17 ft - 5 in	
WEIGHTS	Total unladen	31.970 lbs	
	Front axle unladen (boom retracted and lowered)	13.230 lbs	
	Rear axle unladen (boom retracted and lowered)	18.740 lbs	
TANKS CAPACITIES		Deutz stage IV	Deutz stage 3A
	Fuel tank	40 US gal	40 US gal
	AdBlue	2,7 US gal	n.a.
	Hydraulic oil tank	45 US gal	45 US gal
	Engine oil tank	2,4 US gal	2,4 US gal
	Cooling liquid	6 US gal	6 US gal
HYDRAULIC CIRCUIT	Max. operating system pressure	350 bar	
	Circuit type	Load sensing	
	Service pump	Bosch Rexroth — Variable displacement	
	Controls for boom and turret movements	Danfoss — Electroproportional valve SIL 2	
	Controls for stabilizers	Bosch Rexroth — Electro-hydraulics controls	
	Movements control	1 joystick Danfoss with FNR switch and dead man safety device - Management with CAN bus technology	
CONFORMTY TO STANDARDS	EN 13849: concerning the safety of all controls of the machine EN 1459: concerning rough terrain telescopic handlers EN 13000: concerning the standard of hydraulic cranes EN 280: concerning the standard of aerial platforms FOPS/ROPS 97/68/CE: concerning engine emissions standards		



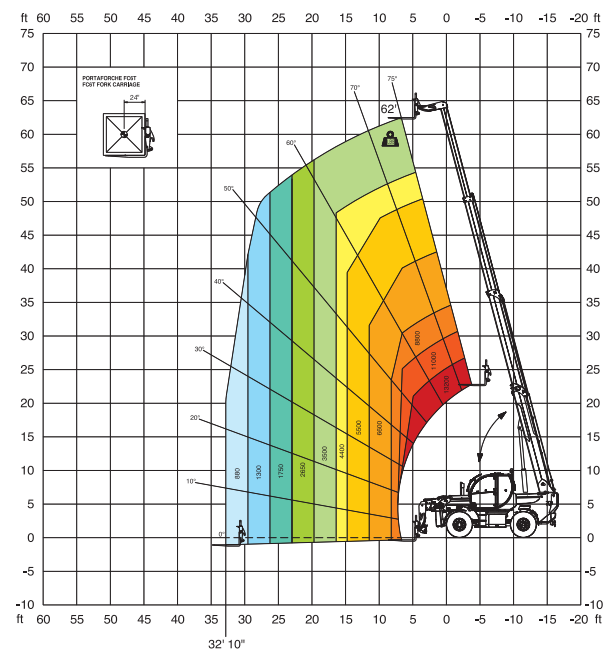
Maximum lifting height: 63 ft
Maximum reach: 47,11 ft
Electronically controlled hydrostatic transmission
Automatic levelling device
Pivoting stabilizers



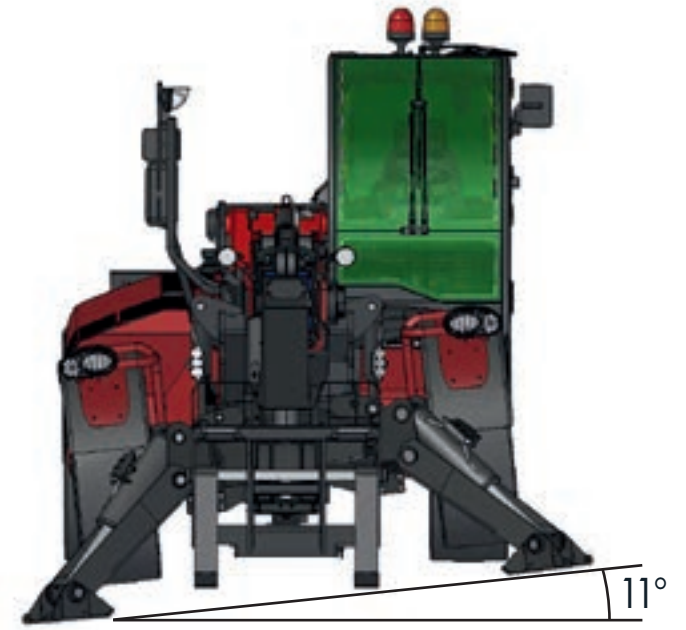
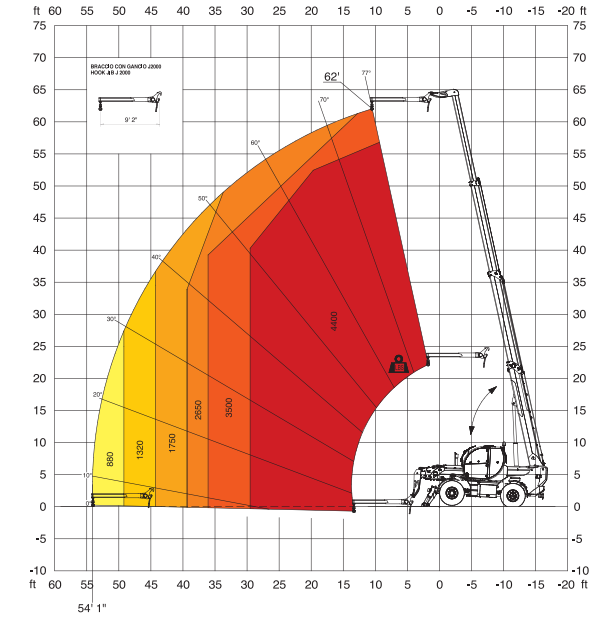
Load chart on stabilizers



Load chart on tyres



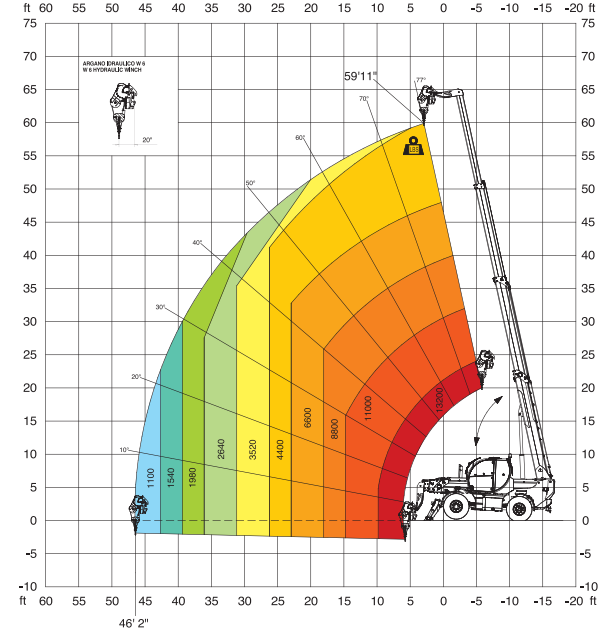
J 2000
Jib 4400 lbs



Leveling works both on wheels and on stabilizers as the front axle is coupled with the stabilizers

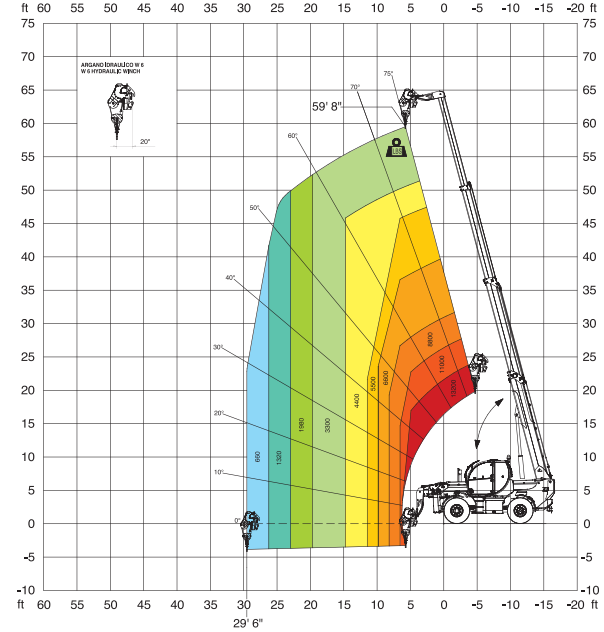
W 6

Winch 13.200 lbs on stabilizers



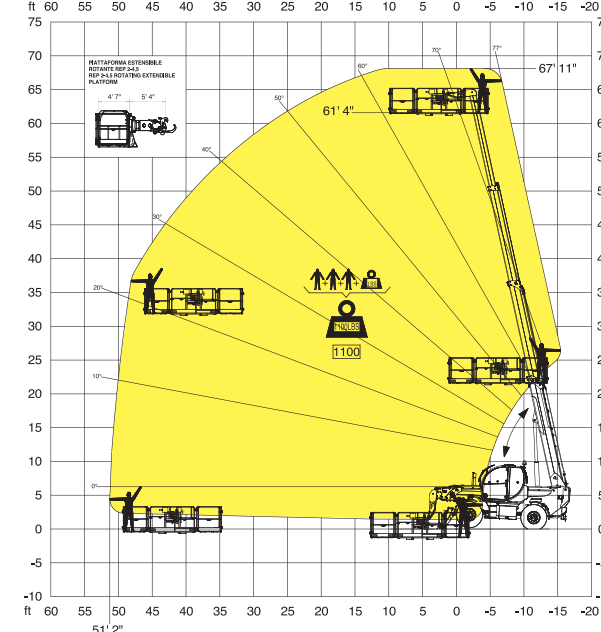
W 6

Winch 13.200 lbs on tyres



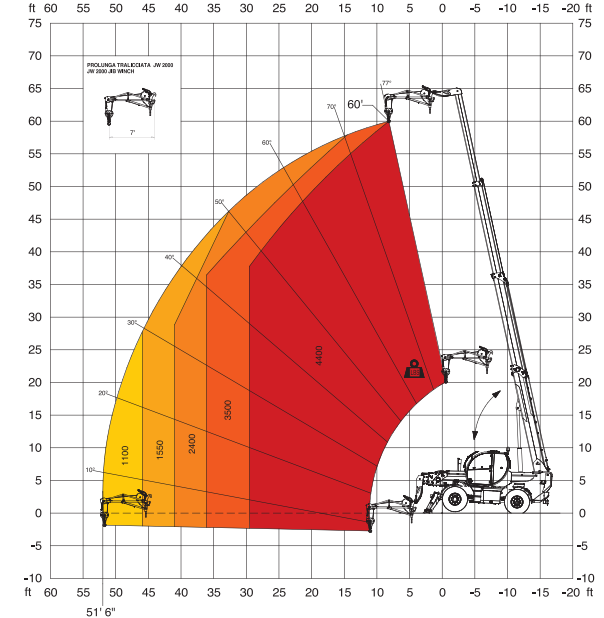
REP 2-4,5

Rotating extendable men platform 1100 lbs



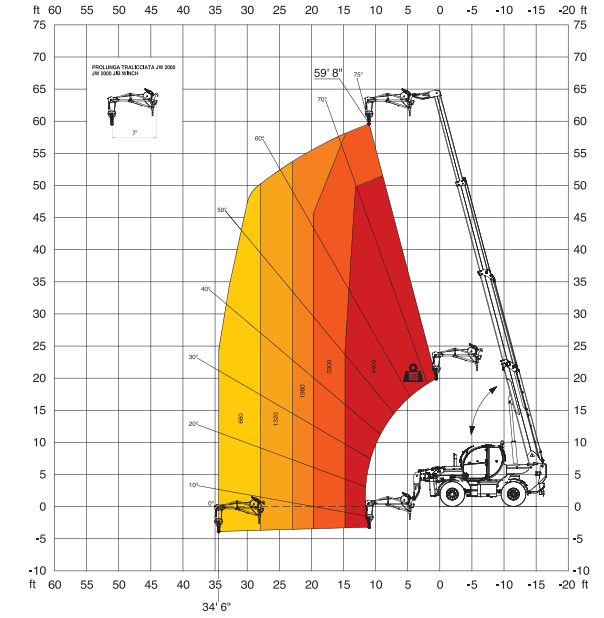
JW 2000

Jib Winch 4400 lbs on stabilizers



JW 2000

Jib Winch 4400 lbs on tyres



This telehandler is equipped with a lateral shifting system that permits to move sideways the rear part of the chassis and, with it, the telescopic boom relative to the longitudinal axis of the machine to correct the load position without the need to move the machine. This system, in fact, allow a shifting of $\pm 5^\circ$ that corresponds to a shift of ± 5 ft, with the boom completely extended, independently from which attachment is equipped.