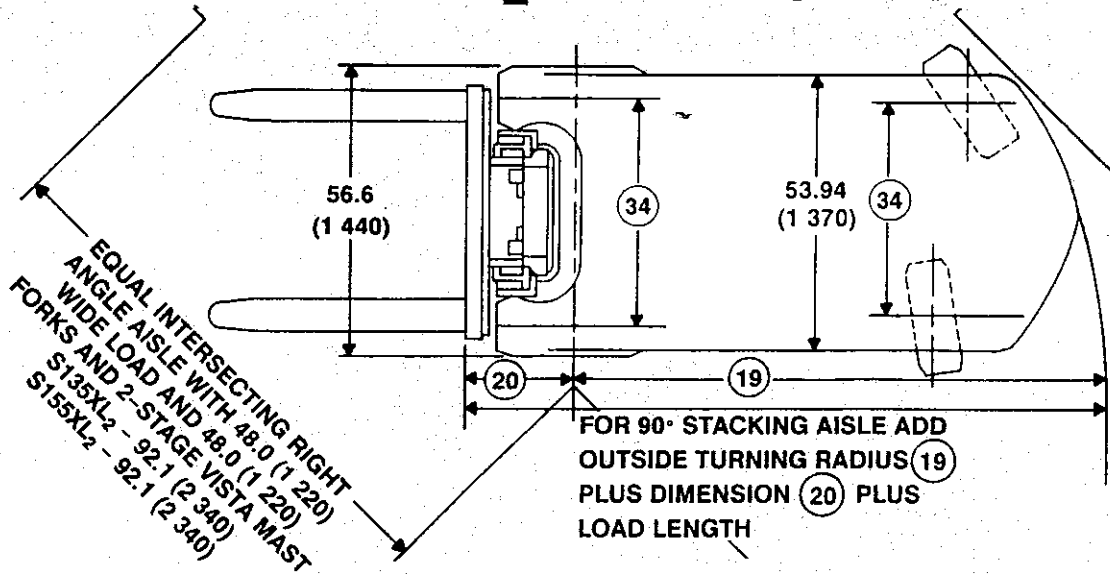




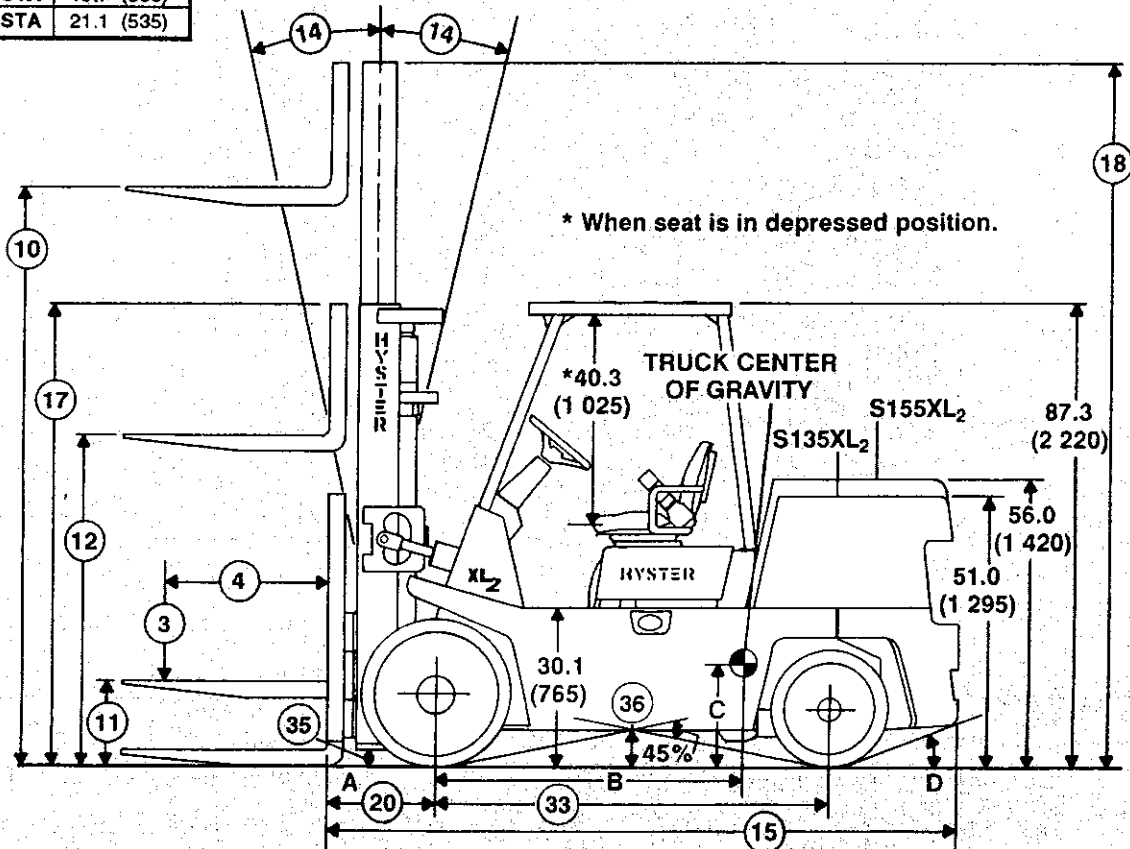
S135-155XL₂ Lift Truck Specifications



MODEL	B in. (mm)	C in. (mm)	D
S135XL ₂	41.8 (1 060)	29.35 (745)	42%
S155XL ₂	43.6 (1 105)	34.7 (880)	42%

MODEL	TRUCK CAPACITY lb. (kg)	LOAD CENTER in. (mm)	CENTER of DRIVE AXLE MOMENT in. lb. (cm kg)
S135XL ₂	13,500 (6 000)	24 (600)	598,000 (660 000)
S155XL ₂	15,500 (7 000)	24 (600)	677,350 (777 000)

MAST	A
2-STG. LFL VISTA	19.7 (500)
3-STG. FFL VISTA	21.1 (535)



Figures represent U.S. weights and measures, and in parentheses, metric equivalents.
 Circled dimensions correspond to line numbers on the tabulated chart inside Technical Guide.



S155XL₂ Lift Truck Specifications

GENERAL	1	Manufacturer	Hyster Company	Hyster Company
	2	Model	S155XL ₂ (GM Gas / LPG)	S155XL ₂ (Perkins Diesel)
	3	Capacity, rated	15,500 (7 000) lb. (kg)	15,500 (7 000)
	4	Load Center	24 (600) in. (mm)	24 (600)
	5	Power type	Gas / LPG	Diesel
	6	Operator type	Sit	Sit
	7	Tire type, front / rear	Solid/ Solid	Solid / Solid
	8	Wheels, front / rear	2X / 2 (X=drive)	2X / 2
DIMENSIONS	10	2-Stg. LFL (top of forks)	134.0 (3 405) in. (mm)	134.0 (3 405)
	11	Limited free-lift (top of forks)	6.5 (165) in. (mm)	6.5 (165)
	12	Opt. 3-Stg. full-free-lift (top of forks) with/w/o LBE	42.5 (1 050) / 37.5 (952) in. (mm)	42.5 (1 050) / 37.5 (952)
	13	Forks, width / thickness	6.0 (150) / 2.5 (60) in. (mm)	6.0 (150) / 2.5 (60)
	14	Tilt angle, forward / rearward	6 / 10 in. (mm)	6 / 10
	15	Length to face of forks	115.3 (2 930) in. (mm)	115.3 (2 930)
	16	Width, standard tires	56.6 (1 440) in. (mm)	56.6 (1 440)
	17	Height, standard mast lowered	106.0 (2 690) in. (mm)	106.0 (2 690)
	18	Height, standard mast extended, with/w/o LBE	182.0 (4 625) / 180.0 (4 570) in. (mm)	182.0 (4 625) / 180.0 (4 570)
	19	Turning radius, minimum outside	101.8 (2 585) in. (mm)	101.8 (2 585)
	20	Length, center drive axle to face of forks	19.7 (500) in. (mm)	19.7 (500)
	21	Aisle width, (add load length for 90 degree stack)	121.5 (3 085) in. (mm)	121.5 (3 085)
	PERFORMANCE †	22	Stability, (comply with ANSI)*	YES
23		Travel speed, manual/powershift, maximum forward	13.0 (20.9) / 14.6 (23.5) mph (km/hr.)	12.5 (20.1) / 13.5 (21.7)
24		Lift speed, standard mast, NL / RL	84.0 (0.43) / 79.0 (0.40) ft/min. (m/s)	84.0 (0.43) / 79.0 (0.40)
		Opt. 3-Stg. FFL mast, NL / RL	80.0 (0.41) / 73.0 (0.37) ft/min. (m/s)	80.0 (0.41) / 73.0 (0.37)
25		Lowering, standard mast, NL / RL	88.0 (0.45) / 108.0 (0.55) ft/min. (m/s)	88.0 (0.45) / 108.0 (0.55)
		Opt. 3-Stg. FFL mast, NL / RL	77.0 (0.39) / 110.0 (0.56) ft/min. (m/s)	77.0 (0.39) / 110.0 (0.56)
26		Drawbar pull, manual/powershift, 1 mph	8,530 (37.9) / 8,885 (39.5) lb. (kN)	7,345 (32.6) / 8,365 (37.2)
	LPG data on (this line only)	7,675 (34.1) / 8,000 (35.5) lb. (kN)	---	
27	Gradeability, manual/powershift, 1 mph NL / RL	24 / 24 24 / 25 Percent	24 / 20 24 / 23	
	LPG data on (this line only)	24 / 21 24 / 22 Percent	---	
WT	28	Total approximate weight, standard equipped truck	20,425 (9 265) lb. (kg)	20,425 (9 265)
	29	Axle loading, static-RL front / rear	32,630 (14 800) / 3,455 (1 570) lb. (kg)	32,630 (14 800) / 3,455 (1 570)
WHEELS & TIRES	30	Number of tires, front / rear	2 / 2	2 / 2
	31	Tire size, drive tires (front)	28 x 12 x 22	28 x 12 x 22
	32	Tire size, steer tires (rear)	22 x 8 x 16	22 x 8 x 16
	33	Wheelbase, center of steer to center of drive axle	72.0 (1 830) in. (mm)	72.0 (1 830)
	34	Tread, center to center of tires, steer / drive	44.6 (1 135) / 46.9 (1 190) in. (mm)	44.6 (1 135) / 46.9 (1 190)
	35	Ground clearance, lowest point-NL	3.5 (90) in. (mm)	3.5 (90)
	36	Ground clearance, center of wheelbase-NL	7.2 (185) in. (mm)	7.2 (185)
	37	Brakes, method of control, service / parking	Hydraulic / Mechanical	Hydraulic / Mechanical
38	Brakes, method of operation, service / parking	Foot / Hand	Foot / Hand	
DRIVETRAIN	40	Battery, volts / cold cranking amps	12 / 335 V / amps	12 / 670 ^{^^}
	41	Engine, make-model	GM V6-4.3L	Perkins 1004-4
	42	Output per SAE standards, Gas / LPG	93.8 (70.0) / 87.4 (65.4) hp (kW)	82.0 (61.5)
	43	Governed speed, NL	2,500 RPM	2,500
	44	Cycle / number of cylinders / displacement	4 / 6 / 262.0 (4 300) cu.in. (cm ³)	4 / 4 / 244.0 (4 000)
	45	Clutch type, manual/powershift	Oil Clutch / Torque Converter	Oil Clutch / Torque Converter
	46	Gear change type, powershift	Foot / Hand	Foot / Hand
	47	Number of speeds, manual/powershift, forward / reverse	3 / 3 2 / 2	3 / 3 2 / 2
	48	Transmission type	Manual / Powershift	Manual / Powershift
	50	Relief pressure for attachments	2,250 (15 500) psi (kPa)	2,250 (15 500)

* **CERTIFICATION:** These Hyster lift trucks meet design specifications of Part II ANSI B56.1-1969, as required by OSHA Section 1910.178 (a) (2) and with Part III ANSI B56.1 in effect at the time of manufacture. Certification of compliance with the applicable ANSI standards appears on the lift truck's nameplate which is affixed to truck when shipped complete from the factory.

† **NOTE:** Performance specifications are for truck equipped as described under Standard Equipment on the back of this Technical Guide. Performance specifications are affected by the condition of the vehicle and how it is equipped, as well as the nature and condition of the operating environment. If these specifications are critical, the proposed application should be discussed with your dealer.

^{^^} **Two batteries.**



S135-155XL₂ Mast Dimensions and Performance Charts

S135XL₂ MAST DIMENSIONS		in. mm								
Maximum Fork Height † (Top of Forks)	Overall Lowered Height	Overall Extended Height				* Free-Lift (TOF)		Total Weight		
		With Load Backrest Ext.	Without Load Backrest Ext.	Without Load Backrest Ext.	Without Load Backrest Ext.	Without Load Backrest Ext.	of Standard Truck lb. (kg)			
2-STAGE LIMITED FREE-LIFT (LFL) VISTA										
94.5	2 400	86.5	2 195	143.0	3 630	140.0	3 570	6.5	165	18,491 (8 387)
134.0	3 405	106.0	2 690	182.0	4 625	180.0	4 570	6.5	165	18,776 (8 517)
173.5	4 405	126.0	3 200	221.5	5 625	219.5	5 575	6.5	165	19,229 (8 721)
3-STAGE FULL FREE-LIFT (FFL) VISTA										
144.0	3 655	85.5	2 170	192.0	4 875	187.0	4 750	42.5	1 080	19,293 (8 750)
181.0	4 595	98.0	2 490	229.5	5 830	224.5	5 700	55.0	1 395	19,555 (8 870)
220.0	5 605	111.5	2 830	268.5	6 825	263.5	6 695	68.0	1 725	19,835 (8 997)

† Lift heights over 182.5 (4 635 mm) maximum fork height and all 3-stage FFL VISTA masts require reduced capacity and restricted back tilt.
 * On 2-stage LFL and 3-stage FFL VISTA, subtract 5.0 (130 mm) if load backrest extension (LBE) is used.

S155XL₂ MAST DIMENSIONS		in. mm								
Maximum Fork Height † (Top of Forks)	Overall Lowered Height	Overall Extended Height				* Free-Lift (TOF)		Total Weight		
		With Load Backrest Ext.	Without Load Backrest Ext.	Without Load Backrest Ext.	Without Load Backrest Ext.	Without Load Backrest Ext.	of Standard Truck lb. (kg)			
2-STAGE LIMITED FREE-LIFT (LFL) VISTA										
94.5	2 400	86.5	2 195	143.0	3 630	140.0	3 570	6.5	165	20,101 (9 117)
134.0	3 405	106.0	2 690	182.0	4 625	180.0	4 570	6.5	165	20,386 (9 247)
173.5	4 405	126.0	3 200	221.5	5 625	219.5	5 575	6.5	165	20,839 (9 451)
3-STAGE FULL FREE-LIFT (FFL) VISTA										
144.0	3 655	85.5	2 170	192.0	4 875	187.0	4 750	42.5	1 080	20,903 (9 480)
181.0	4 595	98.0	2 490	229.5	5 830	224.5	5 700	55.0	1 395	21,165 (9 600)
220.0	5 605	111.5	2 830	268.5	6 825	263.5	6 695	68.0	1 725	21,445 (9 727)

† Lift heights over 182.5 (4 635 mm) maximum fork height and all 3-stage FFL VISTA masts require reduced capacity and restricted back tilt.
 * On 2-stage LFL and 3-stage FFL VISTA, subtract 5.0 (130 mm) if load backrest extension (LBE) is used.

LIFTING / LOWERING PERFORMANCE							
	Lift Truck Mast Type	No Load (All Models)		Rated Load			
		ft./min.	m/s	S135XL ₂		S155XL ₂	
				ft./min.	m/s	ft./min.	m/s
Lifting	2-Stage LFL VISTA	84.0	0.43	79.0	0.40	79.0	0.40
Lifting	3-Stage FFL VISTA	80.0	0.41	73.0	0.37	73.0	0.37
Lowering	2-Stage LFL VISTA	88.0	0.45	108.0	0.55	110.0	0.56
Lowering	3-Stage FFL VISTA	77.0	0.39	110.0	0.56	111.0	0.57

NOTE: Performance specifications are for the truck described under Standard Equipment on the back of this Technical guide. Performance specifications are affected by the condition of the vehicle and how it is equipped as well as the nature and condition of the operating environment. If these specifications are critical, the proposed application should be discussed with your dealer.

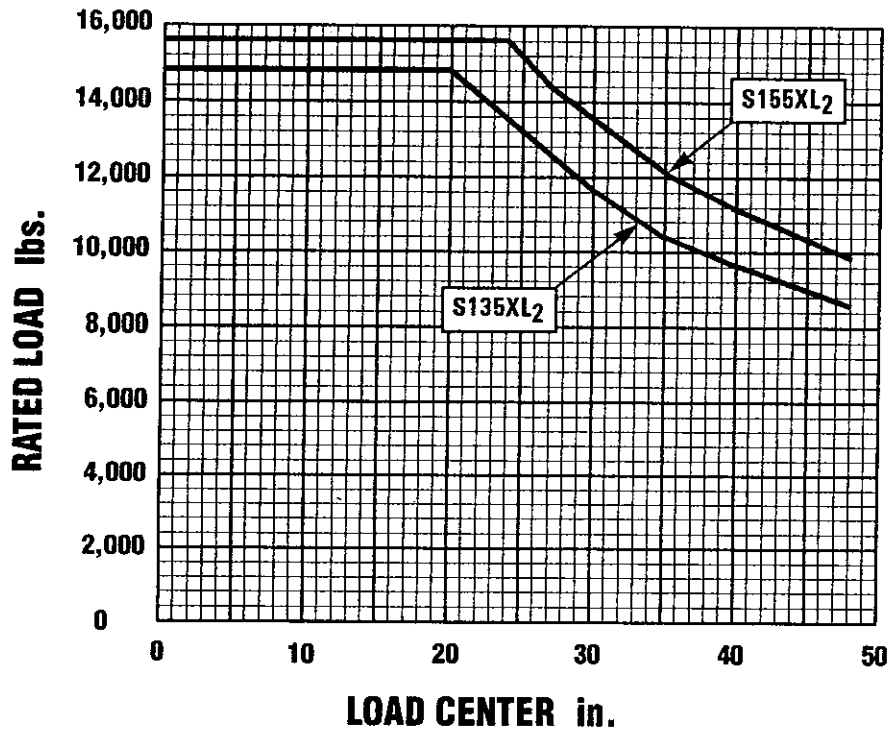


S135-155XL₂ Rated Capacity Charts

RATED LOAD vs. LOAD CENTER

Standard Carriage

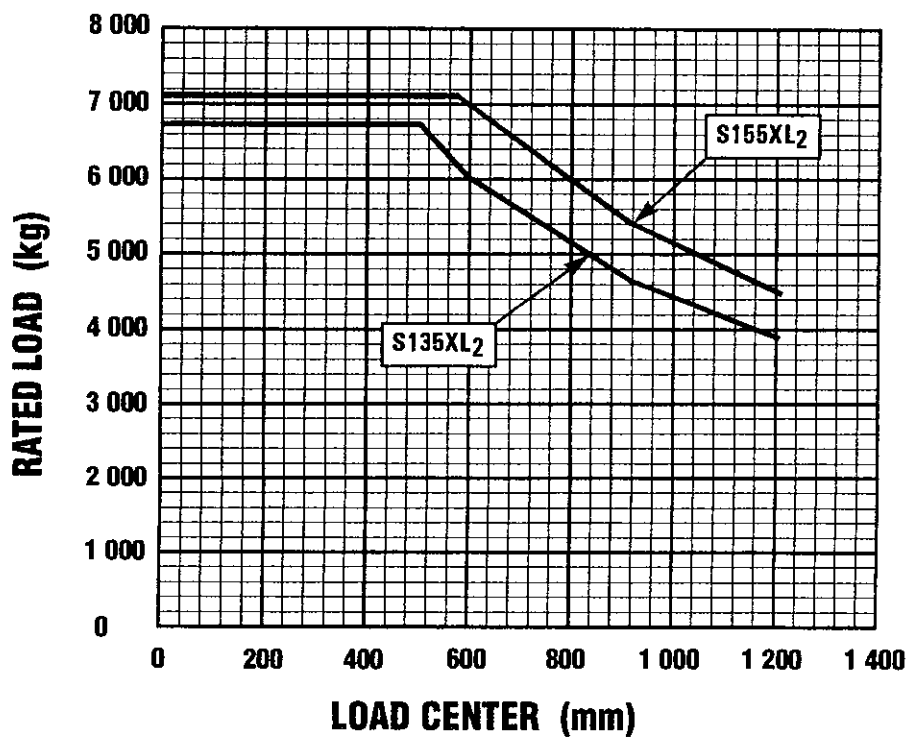
U.S. Customary



RATED LOAD vs. LOAD CENTER

Standard Carriage

Metric





Standard Features and Options

CAPACITY

S135XL2: 13,500 lb. (6,000 kg) at 24" (600 mm) load center.

S155XL2: 15,500 lb. (6,000 kg) at 24" (600 mm) load center.

Rated capacities are for truck equipped with: 2-stage limited free-lift VISTA mast of 182.5" (4,635 mm) maximum fork height; 48.0" (1,220 mm) carriage and 48.0-72.0" (1,220-1,830 mm) forks as required; and load backrest extension.

STANDARD EQUIPMENT

S135-155XL2 trucks are equipped with a GM V6-4.3L gasoline engine; powershift transmission; 134" 2-stage limited free-lift VISTA mast; 48" (1,220 mm) hook-type carriage; load

backrest extension, 48" (1,200 mm) forks; tilt steering wheel; MONOTROL® pedal; 2-function valve; operator's overhead guard; operator restraint system; operating manual; and UL Classification G.

Optional equipment includes: GM V6-4.3L LPG engine; Perkins 1004-4 diesel engine; 3-stage FFL VISTA mast; tilt angles; three-speed fully reversing transmission; UL Classification LP; D; GS, DS and LPS; lug tread tires; 3- and 4-function control valve and hose groups with solenoid-actuated 5-function; steer column direction control lever; semi-suspension seat; overhead exhaust (gas/LPG); head lights, brake/tail lights and rear drive light; back-up alarm; flashing light; directional control lever; and polished and tapered forks.

MASTS

Two-stage limited free-lift and three-stage full free-lift VISTA masts are available. Mast features nested channel design and full-radius, angled load rollers.

CARRIAGES

Hook-type. ITA Class IV mounting. Overall width: 48.0" (1,220 mm) without load backrest extension. 49.3" (1,250 mm) with load backrest extension.

Fork spacing. Inside-to-inside is 0.12" (3 mm). Outside-to-outside is 43.8" (1,110 mm).

FORKS

2.5 x 6.0 x 48-96" (60 x 150 x 1,220-2,440 mm) pallet forks.

ENGINES

Standard GM V6-4.3L electronic fuel injected gasoline engine features include:

- 4 cycle; 6 cylinders; 262 cu. in. (4,300 cm³) displacement
- 4.0" (102 mm) bore; 3.48" (88 mm) stroke
- Electronic governor; heavy-duty, dry-type air cleaner with pre-cleaner
- Dust-proof starter
- Serpentine belt auxiliary drive

- 12-volt electrical system with micro-processor spark timing system (MSTS).

- Maximum torque is 212 ft.lbs. (287 N•m) at 1,600 RPM's.

Optional GM V6-4.3L LPG engine includes:

- IMPCO LPG carburetor
- Fuel filter
- Hydrostatic relief valve
- Solenoid valve
- Vaporizer and regulator
- ICC 43.5 lb. capacity (19.7 kg) LPG tank with fuel gauge, relief valve and manual shut-off valve.
- Maximum torque is 201 ft.lbs. (273 N•m) at 1,400 RPM's.

Optional Perkins 1004-4 diesel engine features include:

- 4 cycle; 4 cylinders
- 243 cu.in. (4,000 cm³) displacement
- 3.94" (100 mm) bore
- 5.00" (127 mm) stroke
- Direct injection
- Distributor-type fuel injection pump with built-in governor
- Quadram combustion system

- Automatic advance and retard mechanism

- Gear-driven water pump

- Cold-starting aid

- Key actuated start/stop solenoid

- Maximum torque is 205 ft. lbs. (278 N•m) at 1,500 RPM's.

15 psi (10.3 mPa) cooling system with either engine: Beta Weld® square wave; radiator; pusher-type fan; bypass thermostat; and conveniently, located recovery reservoir.

TRANSMISSION

- Exclusive Hyster two-speed, fully-reversing powershift transmission
- Transmission and torque converter provide exceptional traction and travel speed performance.
- Inching valve provides precise operator control.
- Oil cooler in radiator cools transmission and reduces clutch wear.

DRIVE AXLE

- Exclusive Hyster drive axle is a full-floating design.
- Wheel hubs rotate on large tapered roller bearings.

BRAKES

- Non-asbestos, self-adjusting shoes at located at the end of the drive axle.
- Self-energizing brakes provide smooth, positive action.
- Combination inching and service brake pedal provides smooth efficient inching control.
- Hydraulic power-assist booster reduces braking effort.

STEERING SYSTEM

- Low effort steering system features pre-loaded tapered roller bearing spindle mountings and fixed length tie-rods which eliminate periodic adjustments.
- Equal-area, double-ended, hydrostatic steering cylinder is mounted in one-piece ductile iron axle frame. Bolt-on, O-ring sealed cylinder end caps simplify resealing.

- Elastomeric axle mounts absorb shock and allow lubrication free articulation.

HYDRAULIC SYSTEM

- 3,100 PSI (21.4 mPa) hydraulic lift system.
- Tilt and auxiliary systems have 2,250 PSI (15.5 mPa) relief pressure in all valve variations.
- Manually operated main control valve provides precise operator control.

OPERATOR AREA

- Instrumentation is within clear view.
- Angled floorplate and pedals aids comfort.
- MONOTROL pedal controls engine speed and truck direction, freeing driver's hands to operate steering and hydraulic levers.
- Five position tilt steer column.
- Hydraulic levers provide operator fingertip control.
- Grid-style overhead guard offers superb high-stacking visibility.
- Contour-designed foam-cushion seat adjusts up to four inches for operator comfort.

Special attachments, equipment or accessories not listed above may be available through SPED for specific application requirements.