

---

Technical sheet

# ATJ 60

Aerial Work Platforms Diesel Articulated with Jib

---



 **MANITOU**  
HANDLING YOUR WORLD

## ATJ 60 SPECIFICATIONS & DIAGRAMS

Capacities	Specifications
Platform height	59 ft 11 in (18.28 m)
Horizontal outreach	39 ft 4 in (12 m)
Overhang	26 ft 3 in (8 m)
Vertical jib rotation	70 ° / -70 °
Platform capacity	500 lbs. (230 kg)
Turret rotation	360 °
Platform rotation (right/left)	90 ° / 90 °
Number of people (inside/outside)	2 / 2
Weight and dimensions	
2.1 - Machine weight*	22,156 lbs. (10050 kg)
2.2 - Platform dimension (L x l)	6ft 11in x 2ft 7in (2.1 x 0.8 m)
b1 - Overall width	7 ft 10 in (2.40 m)
l1 - Overall length	27 ft 7 in (8.42 m)
l9 - Overall length (folded)	20 ft 4 in (6.21 m)
h17 - Overall height	8 ft 10 in (2.71 m)
h18 - Overall height (folded)	9 ft (2.85 m)
h20 - Floor height (access)	1 ft 5 in (0.40 m)
l13 - Jib length	6 ft 7 in (2 m)
b13 - Inner turning radius	5 ft (1.53 m)
wa3 - Outer turning radius	13 ft 8 in (4.17 m)
m2 - Ground clearance at center of frame	1 ft 5 in (0.44 m)
y - Wheelbase	7 ft 10 in (2.40 m)
Performances	
Travel speed	2.90 mph (4.70 km/h)
Working speed	0.50 mph (0.80 km/h)
Gradeability (Transport)	40 %
Maximum incline	5 °
Tires	
Type of tires	Solid Tires cured-on
Drive wheels (front/rear)	2 / 2
Steering wheels (front/rear)	2 / 2
Braking wheels (front/rear)	0 / 2
Engine	
Manufacturer / Model	Kubota D1803-CR-TIE4B
Engine power rating	42.90 hp / 32.80 kW
Miscellaneous	
Ground pressure	290 psi (20.45 daN/cm²)
Maximum available hydraulic pressure	4858 psi (335 bar)
Capacity of hydraulic tank	21.13 US gal. (80 l)
Capacity of fuel tank	20.60 US gal. (78 l)
Vibration level	<0.50 m/s²

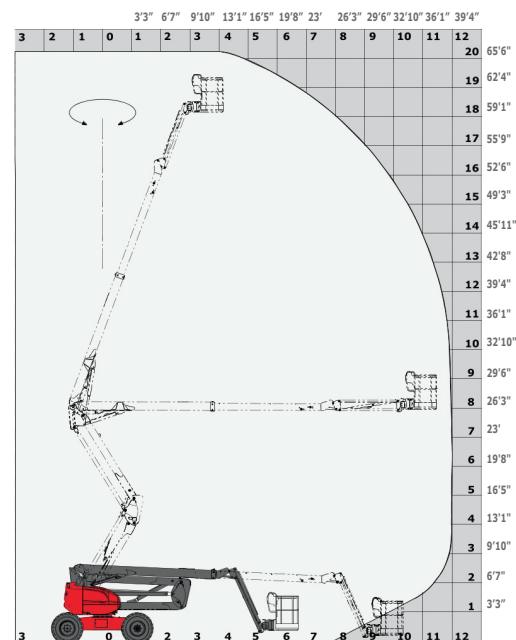
\* varies according to options and standards of the country to which the machine is delivered

## STANDARD FEATURES

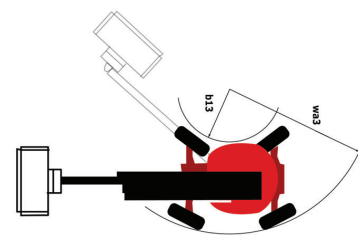
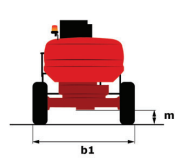
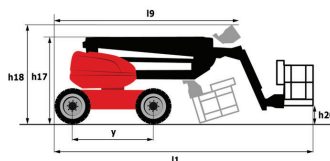
- 500 lbs. (230 kg) Unrestricted Platform Capacity
- 3 Steering Modes
- 4 Simultaneous Movements
- 4 Wheel Drive
- Front Oscillating Axle
- Lift and Drive
- Steer and Rotate
- Constant Rotation Control
- Audible Alarm and Illuminated Lamp (Leveling, Overload, Lowering)
- Emergency Electric Pump
- Swinging Gate on Platform
- CAN Bus Technology
- Operating Pedal
- Differential Locking on Rear Axle
- Emergency Stop Button in Platform and Frame
- Front Axle with Limited Slip
- Fuel Gauge with Low Level Indicator
- Horn in the Platform
- Self-Diagnostic System
- Battery Cut Off
- Proportional Controls
- Protective Cover for Control Panel
- Rotating Beacon Light
- Jib
- Engine Block Heater 110V
- 110V Plug with Differential Circuit-Breaker
- Storage for Tools in Platform
- Drive Safety Orientation System
- Galvanized Platform Mesh Floor
- Tie-Down and Lifting Rings
- EasyMANAGER
- Lockable Fuel and Oil Caps

## OPTIONAL FEATURES

- SMS (Safe Man System)
- Generator 5.0 kW
- Work Light on Platform
- Cold Weather Kit



Conforms to new ANSI standards: ANSI/SAIA A92.20 CSA B354.6



MANITOU NORTH AMERICA, LLC • PO Box 179 • West Bend, WI 53095  
Tel: 262-334-9461 • Fax: 262-338-7517 • www.manitou.com

This publication in no way constitutes an offer and the company reserves the right to alter specifications without notice.  
©2019 Manitou North America, LLC. Manitou. All rights reserved.

ATJ\_60\_tds\_08/9/19